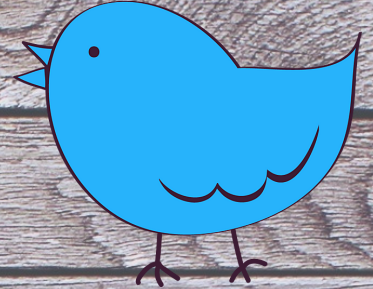
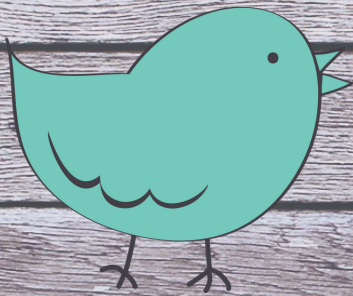


# A message on early share returns...

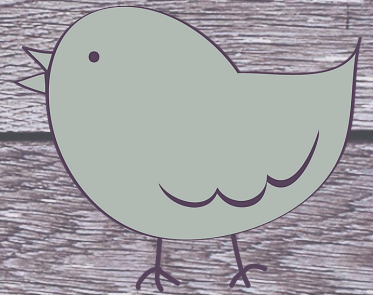
Hey you! Yes you. Leaving the country? For six months?



Yes and yes? Then you may qualify for an **EARLY SHARE RETURN FORM!**

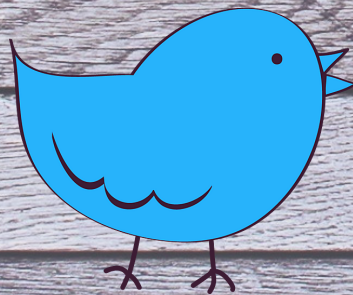


Typically, shares are returned October and March, but you may be eligible to have your share returned early.



To determine your eligibility, fill out this form:

**<http://bit.ly/ICCSHareReturn>**



Be the early bird that gets their share!

